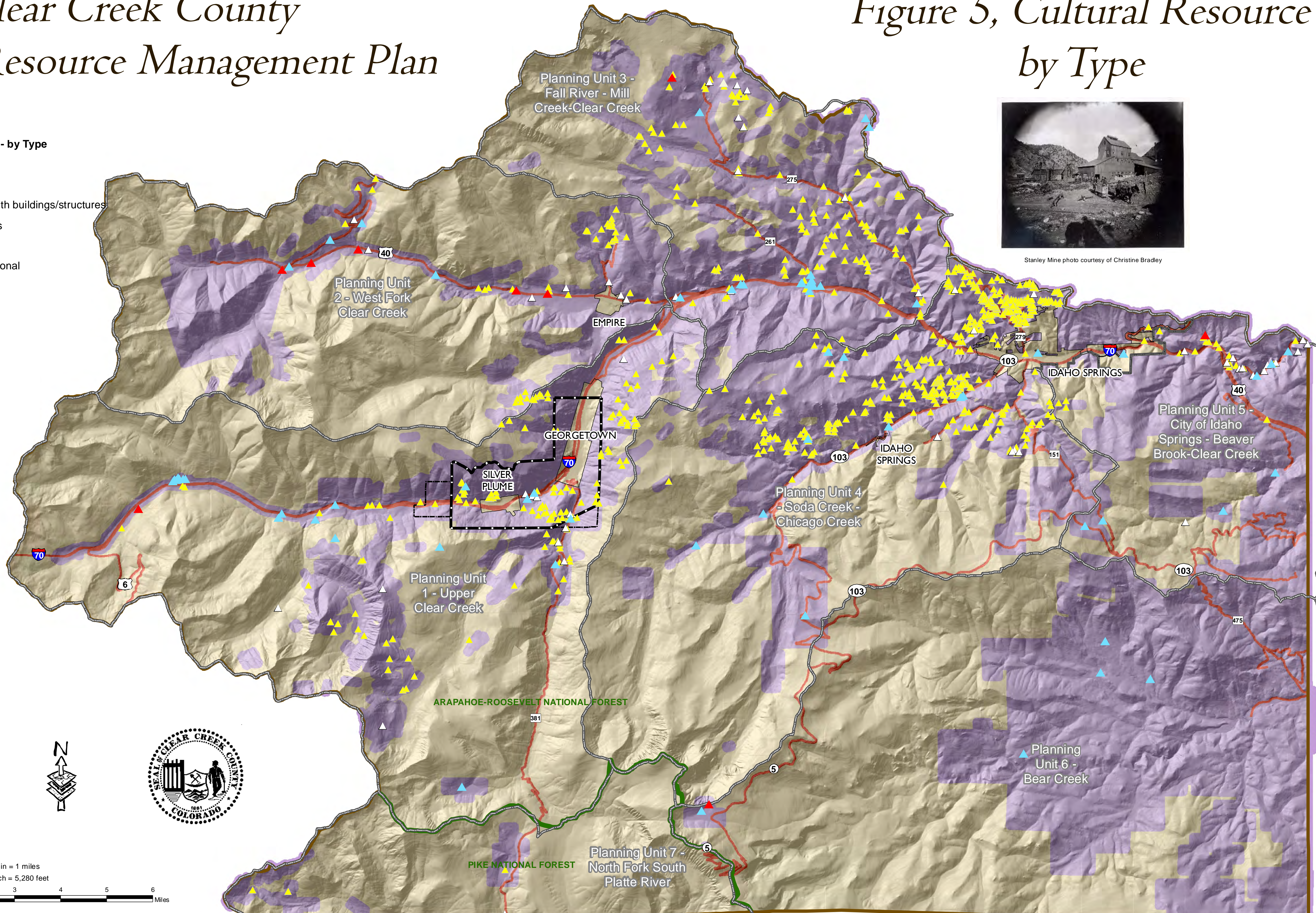


Clear Creek County Cultural Resource Management Plan

Figure 5, Cultural Resource by Type

Cultural Resources - In Project Area - by Type

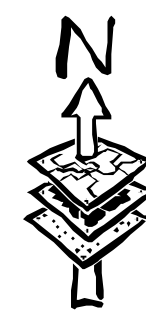
- ▲ Historic archaeological sites
- ▲ Historic buildings/structures
- ▲ Historic archaeological sites with buildings/structures
- ▲ Prehistoric archaeological sites
- ▲ Unknown
- Georgetown Silver Plume National Historic Landmark District
- Public Lands Extended Boundary
- Planning Units
- County Boundary
- National Forest Boundary
- Major Roads
- Project Area
- Outside of Project Area



Stanley Mine photo courtesy of Christine Bradley

This map is a visual representation only, do not use for legal purposes. Map is not survey accurate and may not comply with National Mapping Accuracy Standards. Map is based on best available data as of November 2010.

Sources:
Cultural Sites: Colorado State Historic Society, 08/2009
Study Area: Study area was derived by excluding all US Forest Service Lands, Division of Wildlife Lands, and lands within Municipal boundaries. A 500' buffer was extended into the USFS & DOW lands to ensure inclusion of Cultural Resources that may have bordered those areas.



1 in = 1 miles
1 inch = 5,280 feet

