

# Clear Creek County Cultural Resource Management Plan

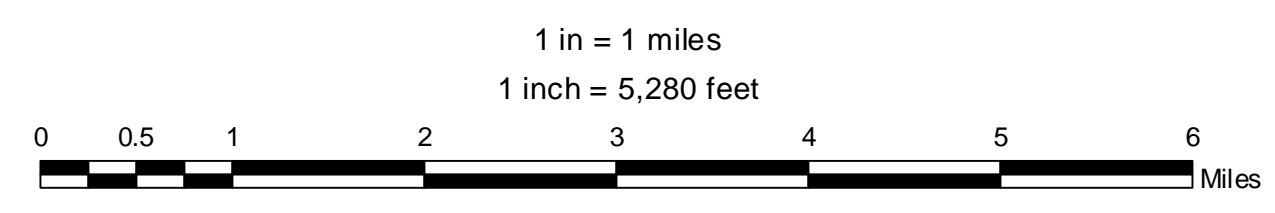
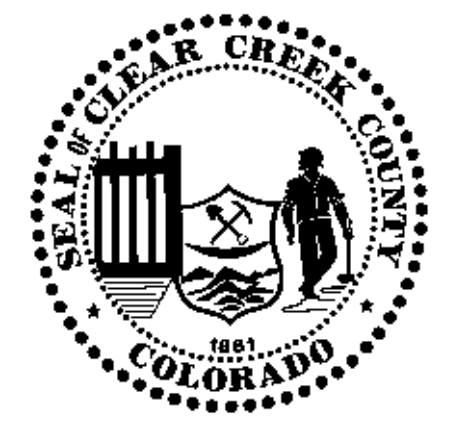
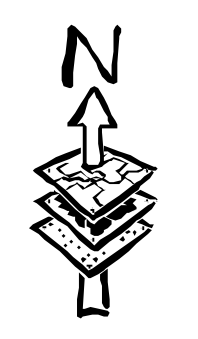
## Figure 4, Cultural Resource Surveys in County

- Surveys in County -6,867 Acres
- ▲ Cultural Resources in Project Area
- Georgetown Silver Plume National Historic Landmark District
- Public Lands Extended Boundary
- Planning Units
- County Boundary
- National Forest Boundary
- Major Roads
- Project Area - 110,441.7 Acres
- Outside of Project Area

253,743.3 - Acres in Clear Creek County  
 110,441.7 - Acres in the Study Area  
 7,942 - Acres have been surveyed in Clear Creek County  
 6,867 - Acres have been surveyed that are partially in the study area.  
 3,195.13 - Acres have been surveyed in the Study Area  
 2.9 % - Percent of Study Area Surveyed

This map is a visual representation only, do not use for legal purposes. Map is not survey accurate and may not comply with National Mapping Accuracy Standards. Map is based on best available data as of November 2010.

Sources:  
 Cultural Sites: Colorado State Historic Society, 08/2009  
 Study Area: Study area was derived by excluding all US Forest Service Lands, Division of Wildlife Lands, and lands within Municipal boundaries. A 500' buffer was extended into the USFS & DOW lands to ensure inclusion of Cultural Resources that may have bordered those areas.



H:\Arcmap\_Projects\spec\_proj\CRMP\Final\_Products\MXD\project\_surveys.mxd

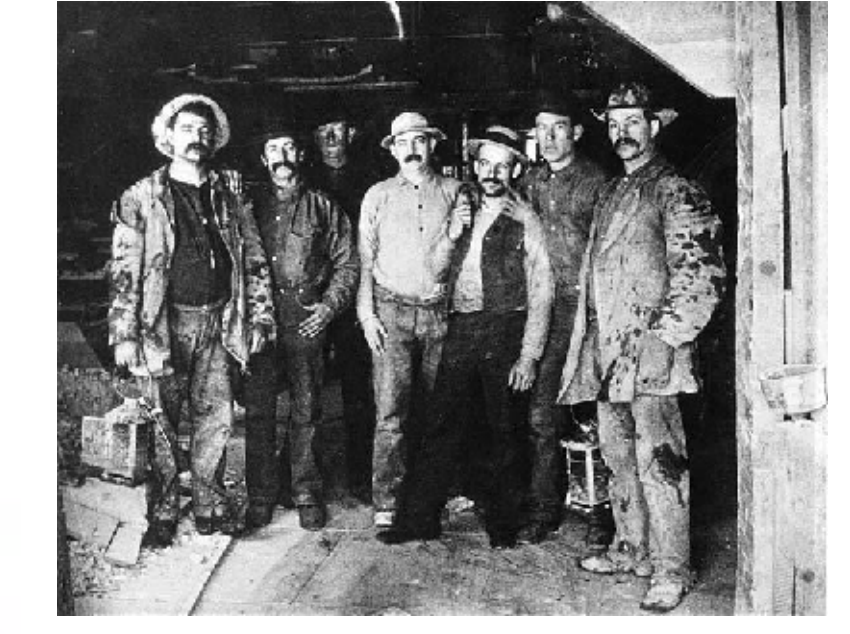
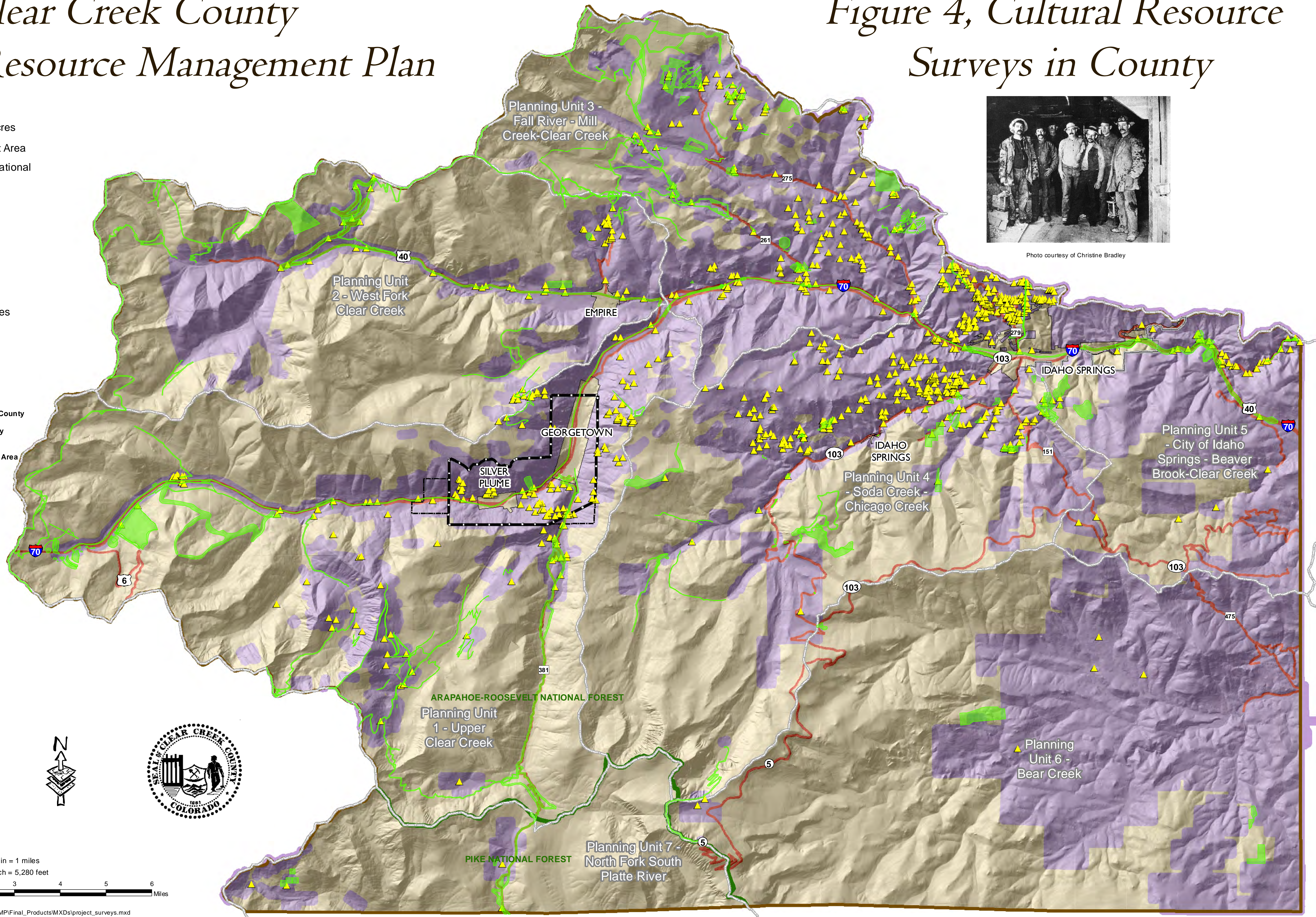


Photo courtesy of Christine Bradley