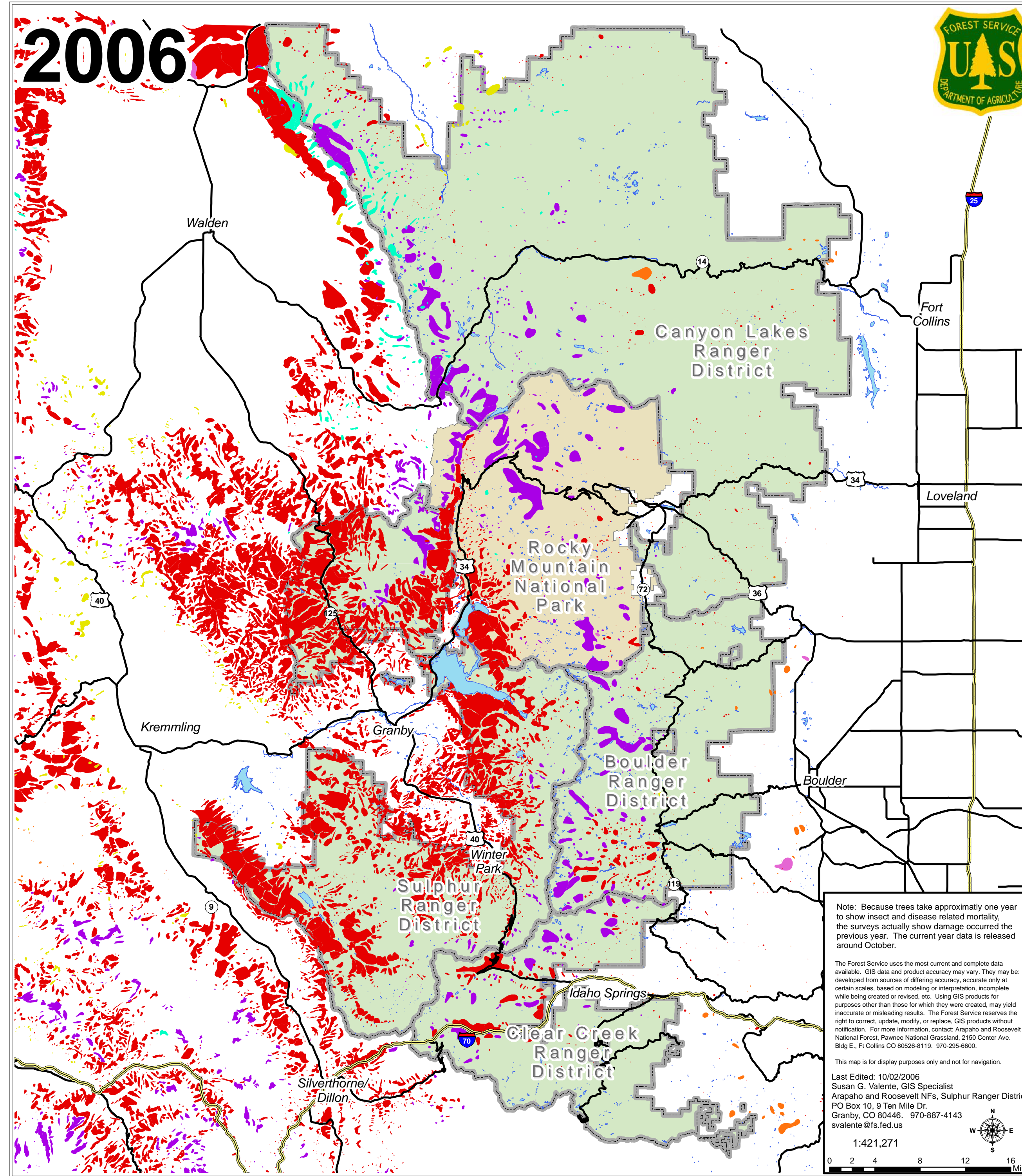
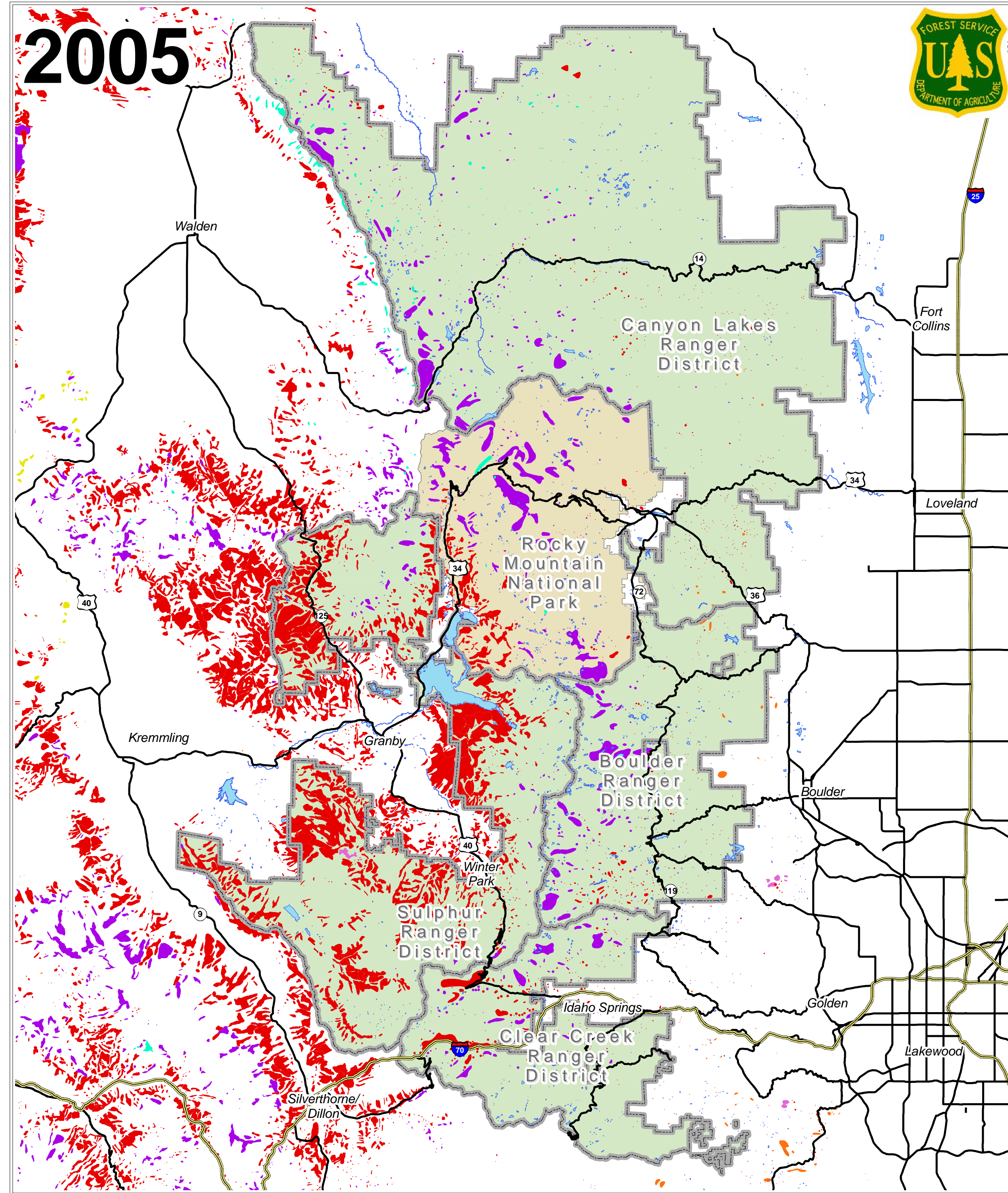
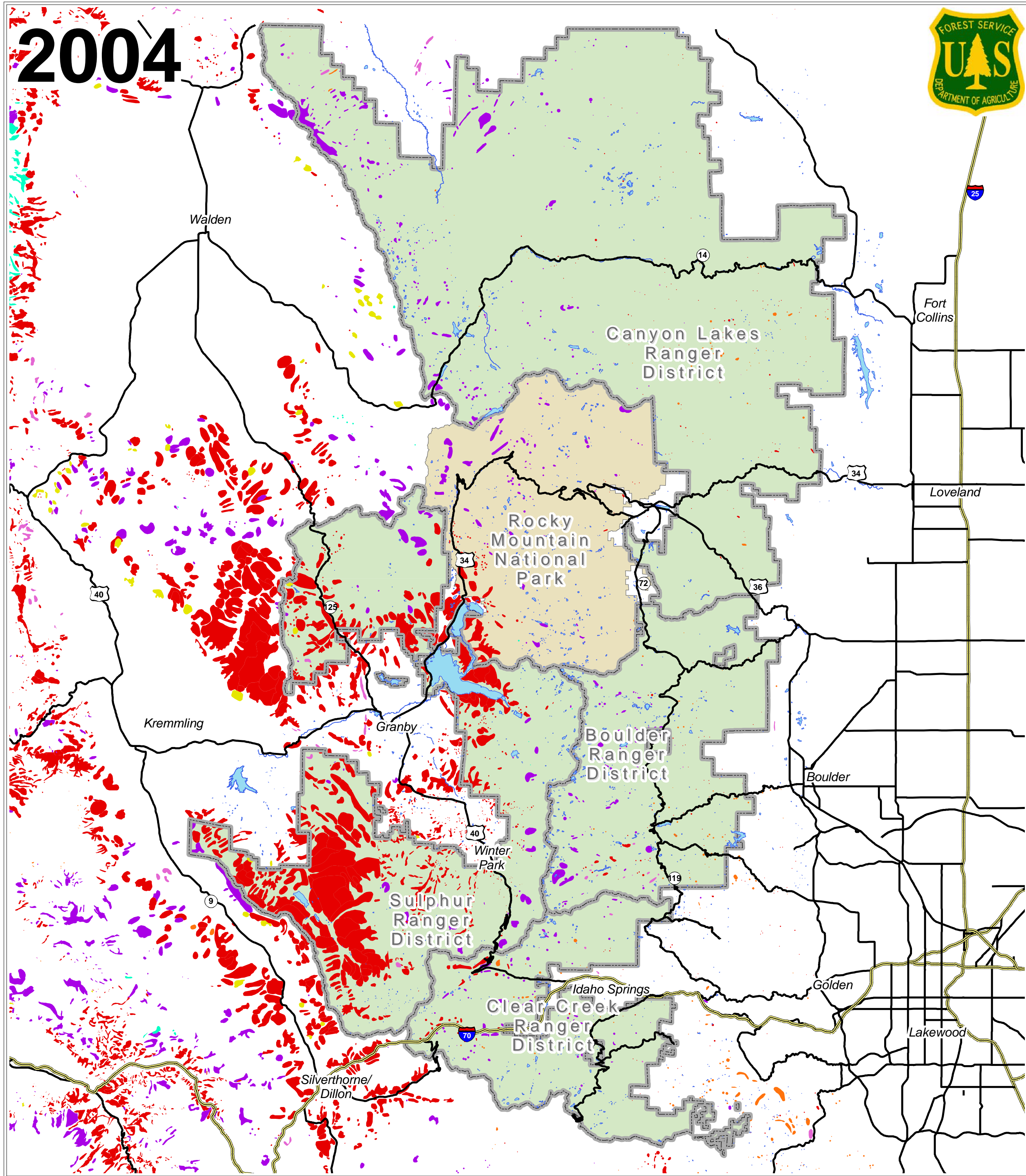
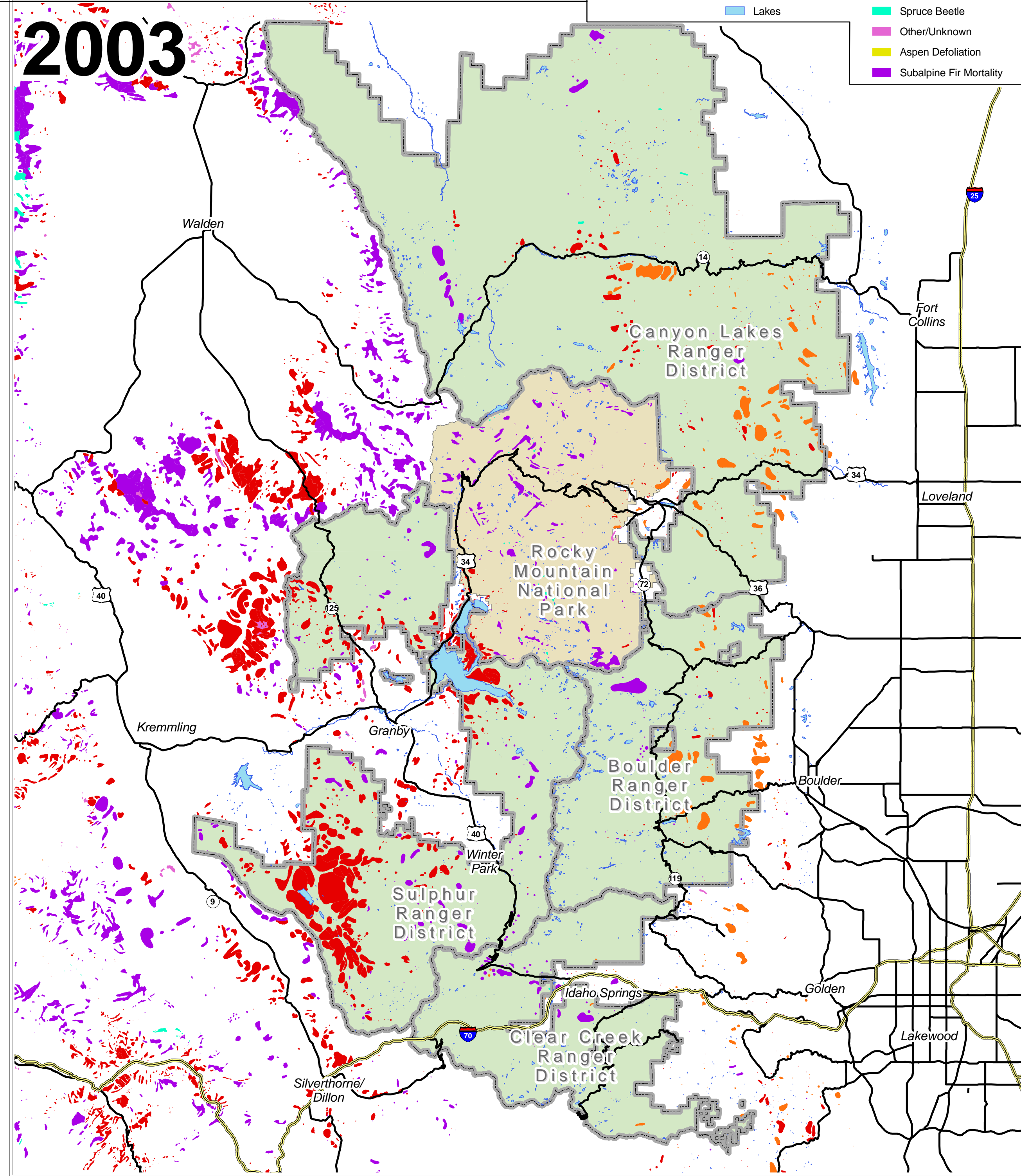
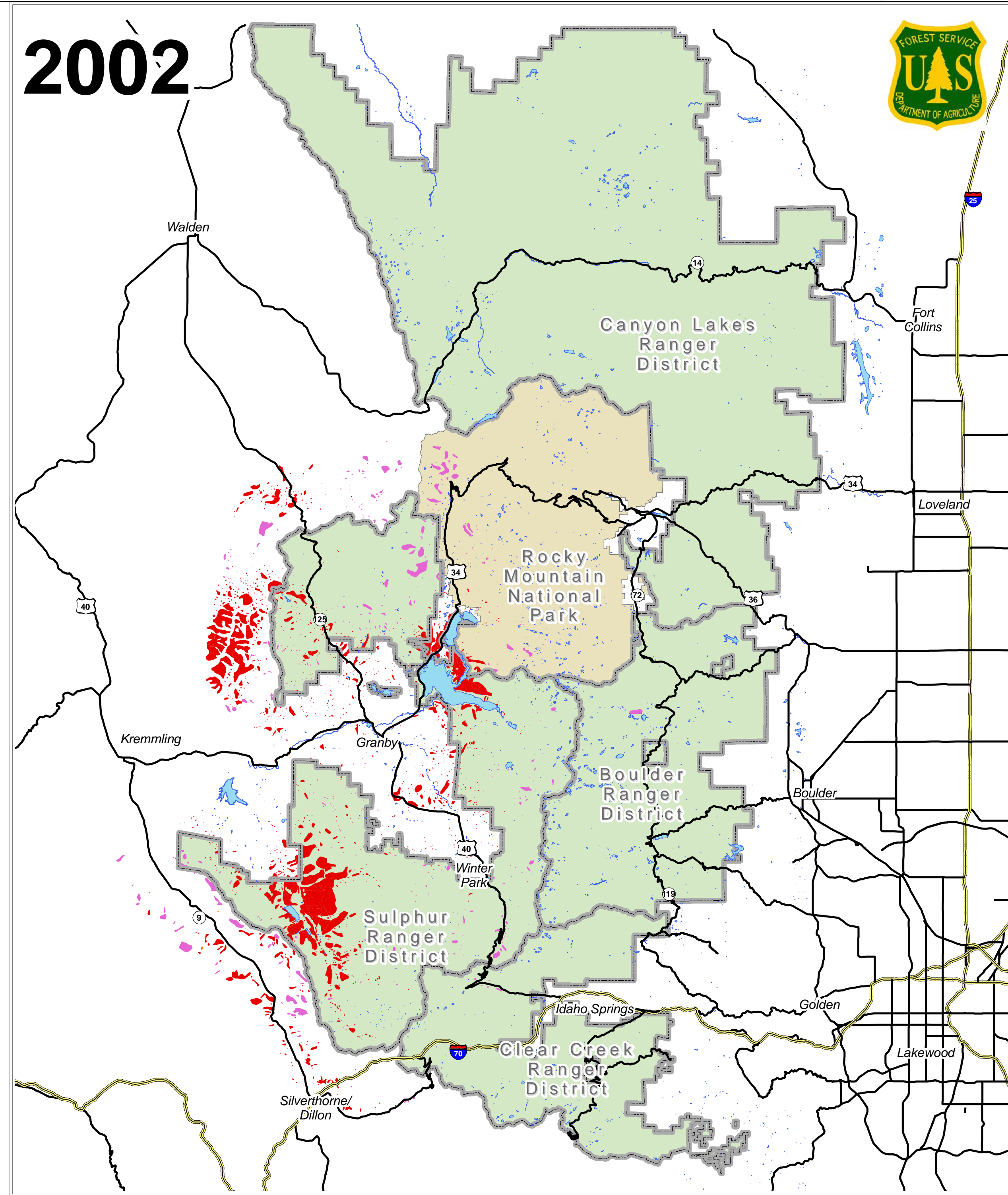
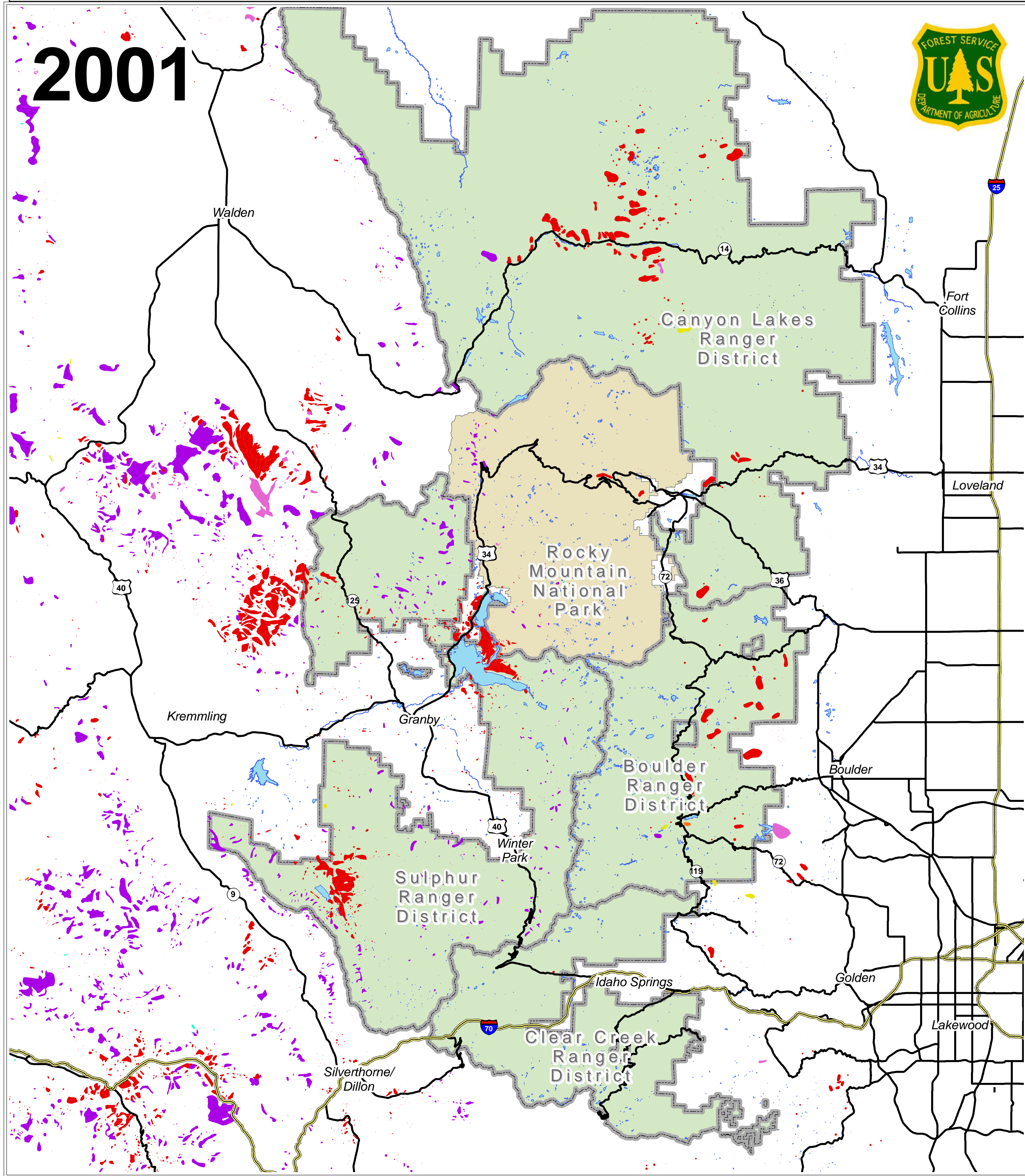


Arapaho and Roosevelt National Forests - Insect and Disease Damage - Progression Map 2001-2005

Legend

- Interstate
- State/U.S. Highway
- Arapaho/Roosevelt NFs
- Rocky Mtn NP
- Lakes
- Other Beetle
- Mountain Pine Beetle
- Spruce Beetle
- Other/Unknown
- Aspen Defoliation
- Subalpine Fir Mortality



Note: Because trees take approximately one year to show insect and disease related mortality, the maps actually show damage occurred the previous year. The current year data is released around October.

The Forest Service uses the most current and complete data available. GIS data and product accuracy may vary. They may be developed from sources of differing accuracy, accuracy may be lower than that of other data, based on modeling or interpretation, incomplete or inconsistent data, or other factors. Users should exercise caution in interpreting results. The Forest Service reserves the right to correct, update, modify or replace GIS products without notification. For more information, contact Arapaho and Roosevelt National Forest, Denver-based Grazing, 2100 South Arapaho Blvd., Ft. Collins, CO 80526-4119. 970-226-6800.

Last Edited: 10/02/2006
 Susan G. Walters, GIS Specialist
 Arapaho and Roosevelt NFs, Sulphur Ranger District
 PO Box 10, 9 Ten Mile Dr.
 Granby, CO 80446. 970-687-4143
 swalters@fs.fed.us

1:421,271